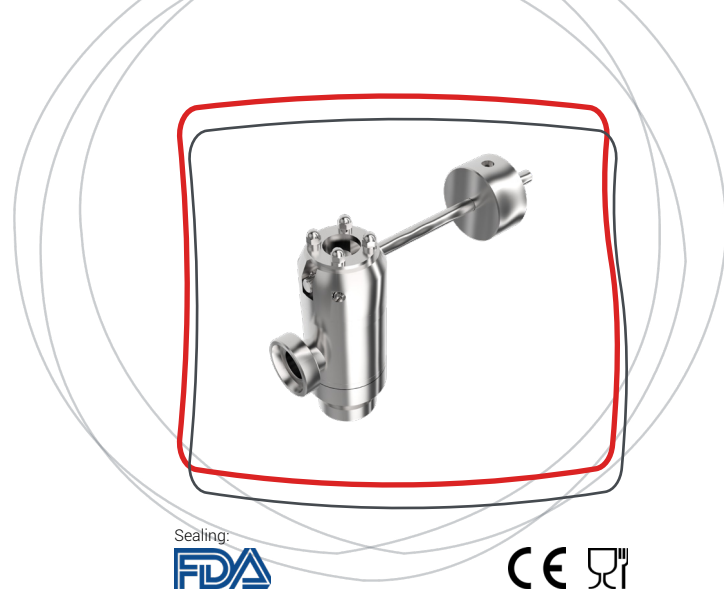


BOT[®]

Pressure safety valve with counterweight for process or storage tanks



Presentation

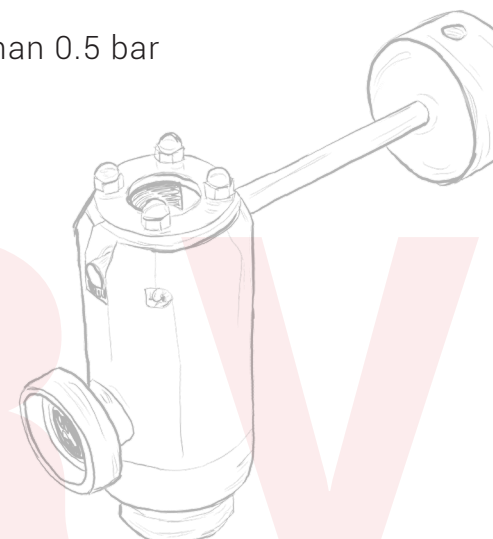
The valves in the BOT range are PED-certified safety equipment designed to protect tanks containing Group 2 gaseous fluids against overpressure (operating pressure greater than 0.5 bar). The blow-off from the valve is collected. The valve consists of a cylindrical body and a leaded stainless steel counterweight mounted on a lever to obtain the setting pressure. In the event of overpressure, the ball releases the fluid into a secondary network. The valve is generally set at a pressure equal to the operating pressure. Sealing is provided by a stainless steel ball up to 120°C, or Arnite® up to 80°C, in contact with an elastomer lip seal. SERVINOX has the tools to size a valve according to the characteristics of the tank (diameter, height), its resistance (pressure, vacuum) and the washing conditions (temperatures, flowrates) and fermentation gas flowrates (°plato).

Key features

- Completely self-contained (no external controls required)
- Pressure setting with counterweight, ensuring excellent reliability over time
- Cost-effective maintenance, with no impact on pressure setting

Applications

- Manufacture and storage of pressurised food and non-food products (beer, wine and spirits, carbonated beverages, sparkling water, etc.)
- Tanks subject to the PED with an operating pressure greater than 0.5 bar
- Exclusively designed to convey gases



Technical features

Sizes: DN 25, DN 32, DN 38, DN 40, DN 50, DN 51

Connection to the tank: Male, female, clamp, flange from DN 25 to DN 50 as per SMS and DIN standards

Operating temperature: from +1°C to +80°C

Pressure range: 0.5 to 6 bar

KD: 0.10

Maximum back pressure: 0.5 bar

Inner surface finish: Ra 0.8 µm

Materials

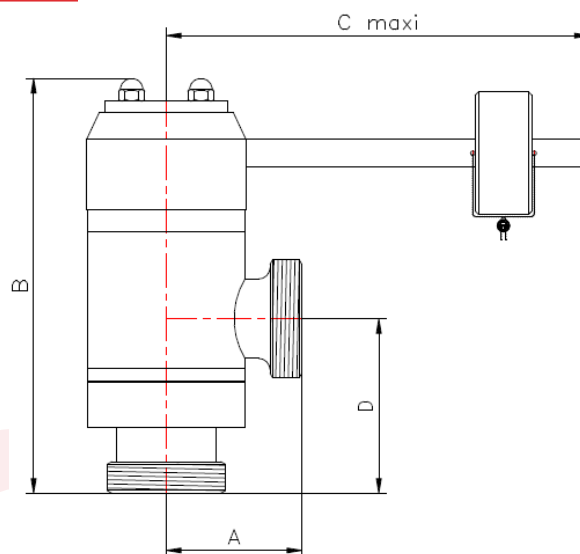
- Parts in contact with the product: Stainless steel 1.4404 (316L)
- Other parts: Stainless steel 1.4301 (304L) and nickel-plated brass
- Sealing: EPDM (Ethylene Propylene Diene Monomer)
- Ball: Arnite®

Dimensions in mm

Models 52 (max. 80°) and 62 (max. 165°): Straight lower connection and blow-off collected

DIN sizes	DN 25	DN 32	DN 40	DN 50
A	60	60	99	99
B	183	183	203	203
C	453	453	465	465
D	77	77	85	85

SMS sizes	DN 25	DN 38	DN 51
A	63	77	77
B	183	203	203
C	453	465	465
D	77	85	85

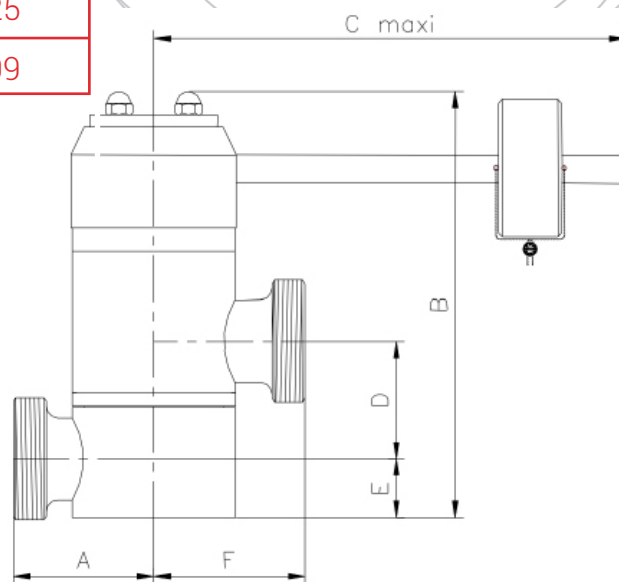


INGWA

Models 54 (max. 80°) and 64 (max. 165°): Side connection and blow-off collected

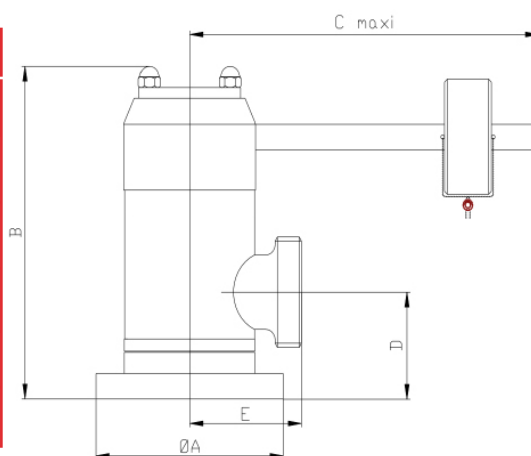
DIN sizes	DN 25	DN 32	DN 40	DN 50
A	60	60	99	99
B	175	175	202	202
C	453	453	465	465
D	48	48	59	59
E	21	21	25	25
F	60	60	99	99

SMS sizes	DN 25	DN 38	DN 51
A	63	77	77
B	175	202	202
C	453	465	465
D	48	59	59
E	21	25	25
F	63	77	77



Models 56 (max. 80°) and 66 (max. 165°): Straight flange connection and blow-off collected (pad-mounted)

Sizes	DIN		SMS	
	DN 25	DN 40	DN 25	DN 38
A	100	120	100	120
B	155	170	155	170
C	453	465	453	465
D	50	52	50	52
E	60	99	63	77



SERV

Options

- Specific surface finish on request (interior and/or exterior)
- Stainless steel ball (operating temperatures below 120°C)
- Lift-off cylinder to allow CIP fluid to flow inside the valve (not in operation)
- Detection of forced opening by lift-off cylinder
- Other seals (specific operating conditions): VMQ (Silicone), FKM (Fluorocarbon rubber, eq. Viton®)

Warranty

12 months as from the date of dispatch (except for special conditions).

Conformity

- PED 2014/68/ EU compliance
- Elastomer seals compliant with FDA CFR 21.177.2600 and Regulation (EC) 1935/2004

